

was geographically located at: Latitude 41°E 53' 07" North and Longitude 106°E 11' 05" West. This information was written in a correspondence from Art Johnson, Assistant Airways Traffic Supervisor, dated September 24, 1930, with cc to Range Medicine Bow, Airways Engineer SL. (Attachment 3)

Attachment 3:
Geographical location of Site 32, from Airways Radio Station, Salt Lake City, Utah, September 24, 1930.

AIRWAYS RADIO STATION
Salt Lake City, Utah

Sep. 24, 1930.

Commissioner of Lighthouses,
Washington, D. C.

GEOGRAPHICAL LOCATION RADIO RANGE.

1. The geographical location of the Medicine Bow, Wyo., Airways Radio Range station is:

Latitude 41° 53' 07" North
Longitude 106° 11' 05" West

Art Johnson,
Asst. Airways Traffic Supervisor.

cc
Range Medicine Bow.
Airways Engineer SL.

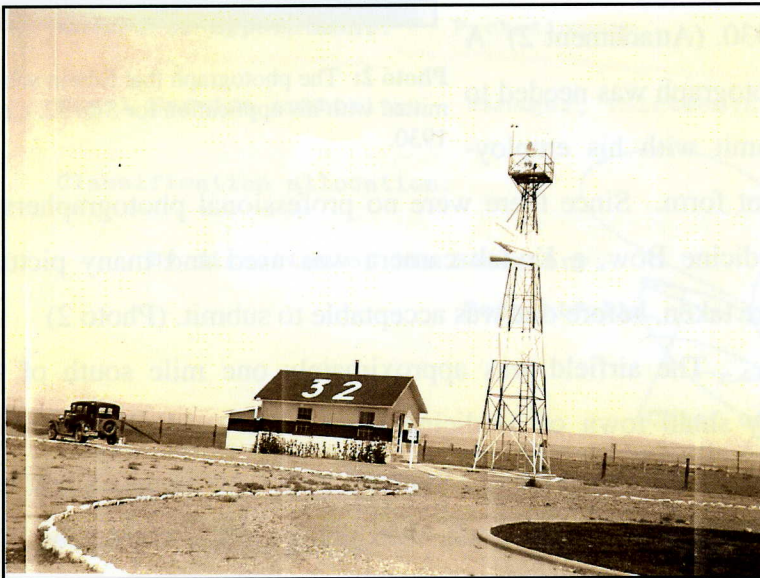


Photo 4: The office building and tower at Site 32, picture 2. This is after the office and the tower had been painted.

The small office building was painted white with a wide red stripe around the center of the entire building. The number "32" was painted on the south side of the roof and the letters "O" and "SL" were painted on the north side. This indicated the location of "Site 32" and the "O" and "SL" meant Omaha to Salt Lake. It was a guide to assist the pilots in determining their location. The tower

was located near the office building and it was also painted white and red; the first section was white and the next was red upward to the base holding the beacon light. The beacon light continually flashed the Morse Code Signal for the letter "U". In addition to the beacon light the